

Subliminal Messenger

Introduction

Subliminal Messenger sneaks little messages into your Windows session. Whether you use Subliminal Messenger as a powerful mind-control tool or as a practical joke is entirely up to you!

Subliminal Messenger is fully configurable. It allows you to use your own messages and choose in what ways you want them displayed.

[Welcome](#)

[Installation](#)

[Configuration](#)

[Feedback](#)



Legal Stuff

[Copyright ©1993, 1994 JCI](#)

[Registration](#)

[License](#)

Other JCI Products:

-  [WinSpool](#)
-  [WinSpool Express](#)
-  [JCI Icon Shell](#)

Welcome to Subliminal Messenger!

Thanks for trying Subliminal Messenger, the power of unconscious suggestion is now yours!

- Train and motivate yourself!
- Eliminate those nasty habits!
- Fool your friends!
- Drive your friends and co-workers crazy!
- Plant suggestions in the minds of others!
Get that raise! Get that date!

Once you try Subliminal Messenger, you'll want register. (In fact, we've made sure of it with a few suggestions of our own. You'll probably even think it was you own idea!)

[Contents/Directions](#)

[Your Help Needed!!](#)

Help! She wants a Diamond!

We're happy to announce our engagement to be married!



Liliana Gutiérrez
(president and financial officer)
and



Brent Jackson
(programmer, customer support, and chief bottle washer)
are soon to be wed.

Lili has her eye on a beautiful diamond engagement ring, but her finger is still naked!

Won't you please register this program to help us out? You'll have great fun playing some good jokes on your friends. At the same time you'll have that wonderful warm feeling that you've contributed to our happiness!

And while you're at it, may we suggest that you check out some of our other fine JCI products.

Many thanks and have fun with Subliminal Messenger!

[CompuServe Registration Instructions](#)

CompuServe Online Registration

The fastest and easiest way to register is via CompuServe's Online Shareware Registration (SWREG).

When you register via SWREG, the registration fee is charged to your CompuServe account and JCI is immediately notified of your registration.

JCI will then send you an authorization code via CompuServe mail. This code will fully enable the program on your computer. In most cases it should only take a few hours to receive your counter code.

Instructions

Follow these instructions to register the program on CompuServe. You will need a valid CompuServe account to do so.

- 1 Log on to CompuServe and go to the Shareware Registration forum [CIS:SWREG].
- 2 Select the option to Register Shareware.
- 3 Select option 1., Registration ID.
- 4 Enter the program's ID number, shown on the About screen.
- 5 If you see the correct program description, confirm it by typing Yes.
- 6 Enter your name and the other information as requested.
- 7 You get one more chance to review, confirm or cancel the registration. Do so. You may now log off CompuServe.

In a few hours or so, you should receive a Registration Notification note in your CompuServe mailbox. This note will include your user name and authorization code.

- 1 Run the program. Click the Register button on the About dialog box.
- 2 Enter your user name and click OK.
- 3 Enter your authorization code and click OK.

You should see a Registration Validated message if the code and user name are correct. The program is now fully enabled on your computer.



Enter your user name exactly as provided by JCI. The authorization code will only work with your user name.

Installation

Program Requirements

- VBRUN300.DLL, the Visual Basic runtime library, needs to be in on your computer in the Windows system directory. Chances are you already have this file installed on your computer. If not, you can find VBRUN300.EXE in the Microsoft Software Library on compuServe (GO MSL).

Program Files

- You can place the program files anywhere on your computer, but they must remain together.
The *.EXE is the program executable file.
The *.HLP is the online help file (the file you are now reading).
- The program will create a private .INI file in your Windows directory.

[Upgrading from a Previous Version](#)

Creating a Program Manager Icon

You can drag and drop .EXE from File Manager to an open window in Program Manager to create a program icon.

Updating from a Previous Version

Nothing could be easier. Just replace the old program files with the new ones. Any settings in your INI file will be honored.

Updates

Small program changes and bug fixes are denoted in the program version numbers by fractional or letter designation. Such updates are free to all registrants of that version. You do not require you to re-register the program.

- If you update from version 1.0 to 1.0a or 1.1 there is no charge.

Upgrades

Major program upgrades, indicating new features or major program rewrites, are shown as whole number jumps in the version number. Such upgrades require renewal of your registration. As a registered user, you are entitled to substantial discounts on upgrades.

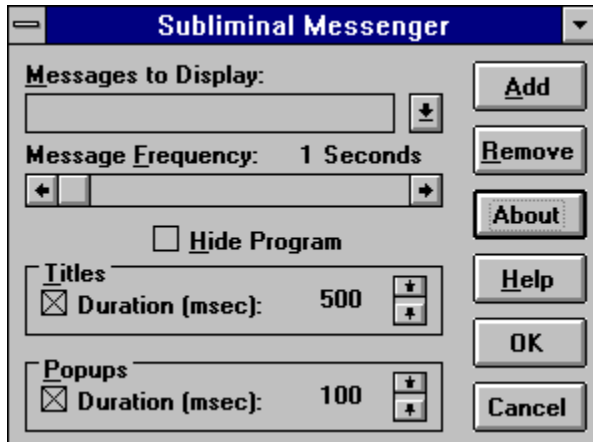
- If you upgrade from version 1.0 to 2.0 or 2.0b there will be a small fee for the upgrade.

Obtaining Updates and Upgrades

- The most current version of the program can be found in the CompuServe WINSHARE forum. You can download these files and replace the existing program.
- You may request a disk with the latest version directly from JCI. There is a US\$5 shipping and handling fee for the disk. Any upgrade fees may also apply.

Configuration

This is the configuration screen, the program's only window. Adjust the various controls to change Subliminal Messenger's behavior.



We Want To Hear From You

JCI is a customer-driven company. We realize that JCI won't succeed as a company if we don't satisfy the needs of our customers. So we've put our customers first.

Our greatest resource is YOU. You provide us with the information necessary for making our products successful. You tell us what we're doing right, what we're doing wrong, and what your needs are. You tell us what you want, and we'll do our best to provide it.

It's a simple plan for success, and it's working well for JCI. Many of the features in our products are a direct result of listening to our customers. The genius of our products comes from our customers, not our programmers.

But for this plan to work we need to hear from you. Any feedback you can give us on JCI products is very appreciated. Even if you hate the program, we want to know! How else will we know what you want?

So let us hear from you! Drop us an [email](#) note or send us a letter. We've even prepared some forms for you to print and send.

[Suggestion Form](#)

[Bug Report Form](#)

[Customer Feedback Survey](#)

[Address Label](#)

Suggestion Form

[Print Form](#)

User Information

User Name _____
Company _____
Address _____

CompuServe ID _____, _____ (any email address)

JCI Product Name _____ Version _____

Suggestion

Please be specific about any enhancements or new features you would like to see in our product. If appropriate, include an example of how you might use this new feature.

Many thanks for your suggestion! JCI values you input and we will consider your suggestion in our future product development.

Bug Report Form

[Print Form](#)

User Information

User Name _____
Company _____
Address _____

CompuServe ID _____, _____ (any email address)

JCI Product Name _____ Version _____

System Information

Computer Brand Name _____
Model Number _____
RAM _____ MB HD _____ MB

Special/Unusual Hardware _____

Operating System _____, ver. _____
Network System _____ (if applicable)
DOS Version _____ (if applicable)

Description of Problem

Describe your problem completely. Please be specific about the steps which cause the problem, and the exact results you are experiencing. Please include (print out or copy onto disk) your configuration files (application .INI file, plus WIN.INI, SYSTEM.INI, CONFIG.SYS, AUTOEXEC.BAT) and any other file which might be related to the problem. We want to be able to reproduce your problem on our test systems, so the more detailed and accurate your information, the better. Remember: what may seem obvious to you may not be obvious to us.

Many thanks for reporting this problem! JCI will use this information to determine and fix the error. We will notify you any fixes we make or any workarounds.

JCI Customer Survey

[Print Form](#)

User Information

User Name _____
Company _____
Address _____

CompuServe ID _____, _____ (any email address)
JCI Product Name _____ Version _____

Survey

- 1 Where did you find out about this JCI program?

- 2 With what operating system are you using the program?
_____ version _____
- 3 Which 3 applications do you use most?
 1. _____ version _____
 2. _____ version _____
 3. _____ version _____
- 4 What feature do you find most useful in your work?

- 5 What new features would you most like to see added to the program?

- 6 Was the program easy to install, configure, evaluate, and register?

- 7 Describe any problems you may have had with the program.

- 8 Have you registered the program? What most influenced you to (not) do so?

- 9 Would you recommend the program to others? If not, please explain.

- 10 JCI maintains a beta test group, which gets to try new JCI products before other users and which guides us in developing new products. Would you be interested in participating in JCI's beta-testing group?

- 11 Please rate yourself in terms of computer expertise.
Beginner 1 2 3 4 5 6 7 8 9 Expert

12 Please make any additional comments which you think might be useful to JCI.

Many thanks for your feedback! JCI values your input and we will consider it when developing products in the future.

[Print Label](#)

JCI

6 Harbor Way 132

Santa Barbara, CA 93109

USA

Copyright ©1994 JCI

This program is Copyright ©1994 by JCI. All rights reserved.

No modifications may be made to this program in any way without the express written consent of JCI.



JCI
6 Harbor Way 132
Santa Barbara, CA 93109
USA

CIS 72607,527

[License / Distribution](#)

License and Warranty

License Agreement

You should read the following terms and conditions carefully before using this software. By using this software you indicate your acceptance of these terms and conditions.

Shareware

This is not free software. This software is protected by copyright law and international treaties. Unauthorized duplication, modification, or distribution of this software in any part, may result in severe civil and criminal penalties.

This license allows you to use this software for evaluation purposes without charge for a period of no more than 30 days. If you use this software after the 30 day evaluation period you are required to register it. If you use this software after the 30 day evaluation period without registering it, you are in violation of this license agreement and copyright law.

Unregistered Version

You are hereby licensed to do any of the following without charge::

- use the unregistered version of the software for a 30 day evaluation period. The program itself may limit the evaluation period to a shorter time.
- make as many copies of the unregistered version of this software and documentation as you wish
- give exact copies of the original unregistered version to anyone
- distribute the unregistered version of the software and documentation in its unmodified form via electronic means

You are specifically prohibited from:

- charging, or requesting donations, for any such copies, however made, except as provided below
- distributing the software and/or documentation with other products (commercial or otherwise) without prior written permission

Registered Version

Once registered, a single copy of the registered software may either be:

- used by a single person who uses the software personally on one or more computers, or
- installed on a single workstation used non-simultaneously by multiple people

You may access the registered version of this software through a network, provided that no more than one user accesses the software per license obtained.

You may move the registered version of the software from one computer to another, provided:

- you delete the registered version from the original computer
- only one registered copy exists per license obtained

Shareware Distributors

Shareware distributors are hereby granted permission to distribute this software, provided:

- no more than US\$5.00 total is charged for any disk, including duplication, handling, shipping, or any other associated service
- distributors must notify the author, in writing, that they are distributing the software
- distributors are requested to send to the author any publication, in which this software is mentioned or advertized
- distributors agree to update and modify any such publication upon request by the author
- distributors agree to distribute only the most current version of the software

The author reserves all copyright and distribution rights to this software and may, at the author's sole discretion, revoke permission to distribute or specifically prohibit distribution of this software by any party.

Shareware distributors should contact the author for a complete master distribution disk. BBS versions do not have an installation program or commonly available support files such as VBRUN300.DLL, so that file sizes can be kept small. The master distribution disks have these features which make installation much easier, especially for beginners.

Disclaimer of Warranty

THIS SOFTWARE AND THE ACCOMPANYING FILES ARE SOLD "AS IS" AND WITHOUT WARRANTIES AS TO PERFORMANCE OF MERCHANTABILITY OR ANY OTHER WARRANTIES WHETHER EXPRESSED OR IMPLIED.

Because of the various hardware and software environments into which the software may be put, NO WARRANTY OF FITNESS FOR A PARTICULAR PURPOSE IS OFFERED.

Good data processing procedure dictates that any program be thoroughly tested with non-critical data before relying on it. The user must assume the entire risk of using the program. ANY LIABILITY OF THE SELLER WILL BE LIMITED EXCLUSIVELY TO PRODUCT REPLACEMENT OR REFUND OF PURCHASE PRICE.

Because Subliminal Messenger gets into the inner workings of Windows, there is a possibility that it could cause errors or failure in other programs. Our testing has not revealed any such cases, but nonetheless you should be aware that the possibility exists. For this reason we restate that: THE USER ASSUMES ALL RISK AND LIABILITY FOR THE USE OF THIS PROGRAM.

JCI specifically makes no warranty as to the effects of any messages passed by Subliminal Messenger. We are not liable for stange behaviors or mental conditions resulting from the use of this program. If you make your sister bark like a dog, cause your co-workers fall in love with eachother, or turn yourself into a compulsive health nut --it's your fault!

If, however, you achieve great success and obtain generous rewards by using Subliminal Messenger --we'll gladly take all the credit and a percentage of your proceeds!

Have fun and remember, YOUR NAME GOES ON IT, so don't do anything malicious (or anything you don't want to take credit for) with this program.

Registration


Evaluation Period


You may use the unregistered program for no more than 30 days to determine if the program is appropriate for your needs. After this evaluation period you must register the program if you continue to use it in any way.

Registration Benefits

- Unlimited program usage. No introduction screen on startup. No nagging messages to make you feel guilty.
- One year of free customer support via CompuServe [email](#) or [US Mail](#).
- Notification of updates and other JCI product releases.
- Discounts on future program upgrades.

JCI Satisfaction Guarantee

 [Money Back Satisfaction Guarantee](#)

 [Excellent Customer Support](#)

[CompuServe Online Registration](#)

[Registration by Mail](#)

[Distribution](#)

We welcome your suggestions, comments or bug reports. They enable us to continue development of this program, make it even more useful, and eliminate any problems.

[Feedback](#)

If you are not satisfied with this product in any way within 30 days after registering, JCI will refund your registration fees in full. We do request that you tell us why you are not satisfied, so that we can continue improving our products.

At JCI we pride ourselves on the excellent support provided to our registrants. JCI is committed to responding promptly, finding solutions, and treating you with the courtesy and respect you deserve.

- Contact JCI via [email](#) or by [US Mail](#).
- In order to keep our overhead costs low, our prices reasonable, and our programmers programming, JCI does not offer telephone support at this time. Please use email. You will discover that JCI can respond quickly and completely to your inquiries.

Our customers are JCI's greatest asset. Not only do they pay the bills, they provide valuable input and guidance in designing and improving our products. You are our source of success. We pledge to earn your loyalty as a customer.

[Feedback](#)

Registration by Mail

JCI has made an effort to keep the costs of this program low and the response times short. For quickest response, pay your registration fees with cash or money order. This allows JCI to send your materials immediately, avoiding any delays caused by waiting for your check to clear.

Just print the registration form, fill it out, and send it in with your registration fee.

For purchase orders, there is a minimum order of five registrations per order if you do not include payment.

[Registration Form](#)

[Register faster, easier via CompuServe](#)

JCI Registration Form

[Print Form](#)

User Name _____
Company _____
Address _____

CompuServe ID _____ (any email address)

JCI Product Name _____ Version _____

Registration Fee _____ US\$

Number of Copies _____

Total Fees _____ US\$

- 1 Print this form.
- 2 Fill in the form
- 3 Send the form and your registration fee to:
JCI
6 Harbor Way 132
Santa Barbara, CA 93109

As soon as we receive your registration and payment, JCI will send you an authorization code. If you include a CompuServe ID or email address, JCI will send you the countercode electronically, which is faster.

- 1 Run Icon Shell. Click the Register button on the About dialog box.
- 2 Enter your user name and click OK.
- 3 Enter your authorization code and click OK.

You should see a Registration Validated message if the code and user name are correct. The program is now fully enabled on your computer.



Enter your user name exactly as provided by JCI. The authorization code will only work with your user name.

[Instant Registration on CompuServe](#)

WinSpool sends printer data files directly to any Windows printer. It is a smart application which automatically detects and spools print files to the appropriate device.

- Solves DOS/Windows printing conflicts
- Delivers your .PRN files to printers after you have printed to the FILE:.
- Allows DOS applications to access network printers.
- Lets you use printers which do not have Windows device drivers.
- Dramatically speeds up printing/plotting speeds.
- Multiple copies.
- Delete or Save files after spooling.
- 3 ways to associate print files with printers, 2 way targeting.
- Supports multiple users, programs, printers, networks.

You can find WinSpool on CompuServe as WINSPO.ZIP in the General Win Utils library of the WINSHARE forum.

WinSpool Express is a simplified version of WinSpool, created specifically for AutoCAD users but usable by all. WinSpool Express provides the basic speed benefits of WinSpool, without the complexity or cost.

- Allows spooling via the Windows Print Manager.
- No configuration required. Super easy to use.
- Works with any program that can print to a file (DOS, Windows, OS/2).
- Inexpensive.

You can find WinSpool Express (WSE) on CompuServe as WSPLEX.ZIP in the Windows/NT library of the ACAD forum.

JCI Icon Shell is a hot new program launcher.

All your favorite programs appear on a strip at the top of your screen and you can instantly launch or switch between programs with just one click.

- Fit ability makes your active program fill the entire work area.
- Smart task switching prevents accidentally starting a second session of a program that is already running.
- Works in concert with, or entirely replaces Program Manager. Automatically installs or uninstalls itself as the Windows shell at your command.
- Full drag & drop support.
- Easy to configure and use.
- Built in clock.

Try Icon Shell, you'll never go back to your present shell program!

You can find Icon Shell on CompuServe as ICONSH.ZIP in the Program Managers library of the WINSHARE forum.

[Click here for program information.](#)

After you type a new message in the Messages to Display combo box, you can add it to the list by clicking this button.

[Click here to discard your changes and cancel the operation.](#)

This is a standard control box, double click to exit the program. This is the only way to exit.

[Click here to get more help.](#)
This is the same as pressing F1.

If you set this checkbox the program will hide itself after you click the OK button. Only registered programs allow you to use this feature. After the program is hidden, you will never see Subliminal Messenger again. It will hide in the background and run.

- There are only two ways to stop the program:
 1. quit Windows or
 2. end the program with Task Manager.
- Once hidden, you can cause the program to reappear by starting the program with the "/config" parameter.

Use the scroll bar to adjust how often a subliminal message is displayed.
The frequency you select is approximate. Subliminal Message will randomly adjust the frequency by +/- 50% of the interval you select. This is so that message appearance will not become predictable to the user.

This is a dropdown combination list box which shows all of the messages you want the program to display.

- Add new messages by typing something in the box and clicking the Add button.
- Remove messages from the list by selecting them and clicking the Remove button.

You can minimize the form with this button. This is equivalent to clicking the Cancel button. All of your changes will be forgotten.

[Click here to save the changes you have made.](#)

Set the checkbox to make Subliminal Messenger flash it's messages at random locations on the screen. Adjust the Duration to set how long the subliminal message remains visible. Since Popups will attract the attention of the user, short durations (100 - 500 msec) are advised. You want the user to question if they actually saw something. If the duration is too long, the joke will be obvious.

To remove a message from the list of messages to display select an item from the Messages to Display combo list then click on this button.

Set the checkbox to make Subliminal Messenger sneak it's messages into the title bars of programs. Adjust the Duration to set how long the subliminal title remains visible before restoring the original title.

Titles are a little more sneaky than Popups. They don't have that flashy appearance so users might not notice them right away. Longer durations (500 - 1500 msec) are advised.

email

JCI email addresses CompuServe 72607,527
Mail 400 MHS!CSMAIL!72607,527

internet 72607,527@compuserve.com AT&T

happiness

measured in dollars

JCI products

Our other products are much more serious-minded, professional, and practical than this program. But this program is much more fun!

naked

That's her FINGER that's naked!

register

just send us all your money, OK?

suggest

it's a subliminal program, right?

US Mail

JCI, 6 Harbor Way 132, Santa Barbara, CA 93109 USA

